

Phaser®
6360
A4
Colour
Laser Printer



Xerox® Phaser® 6360 Colour Laser Printer Evaluator Guide



About this Guide

This guide will introduce you to the Xerox Phaser 6360 colour laser printer, and help you in your printer evaluation process.

Section 1: Introducing the Xerox Phaser 6360 colour laser printer

- 3 Product Overview
- 4 Phaser 6360 Configurations

Section 2: Evaluating Colour Laser Printers

- 5 Overview
- 6 Evaluating Printing Performance and Print Quality
- 7 Evaluating Installation
- 8 Evaluating Ease of Use
- 10 Evaluating Management

Section 3: Single Pass Colour Laser Technology

- 11 Inside a Colour Laser Printer

Section 4: Configurations, Specifications, Supplies, Support and Information Sources

- 12 Configuration Summary
- 13 Specifications
- 14 Supplies, Options and Extended Service Agreements
- 15 Support and Additional Information Sources

Section 1: Introducing the Xerox Phaser 6360 Colour Laser Printer

Product Overview

Setting the standard for high-performance colour laser printers, the Xerox Phaser 6360 leads the industry with best-in-class print speeds and exceptional colour performance. Easy to operate and engineered to meet the exacting demands of high-volume office environments, the Phaser 6360 colour laser printer isn't just an obvious choice — it's the only choice.

Unrivaled performance

In the race for print speed supremacy, the Phaser 6360 printer sets the pace.

- Get unparalleled, professional-quality colour at a high print speed of up to 40 ppm
- Stay efficient in a busy environment with a first-page-out time as fast as 9 seconds
- As the industry's only A4-size colour printer with a built-in 1 GHz processor, the Phaser 6360 has the power to handle even the most complex print jobs

Printing simplified

With ultra-fast setup and seamless operation, the Phaser 6360 printer delivers unbeatable ease of use.

- User-friendly installation software gets the Phaser 6360 out of the box and running smoothly on your network in minutes
- Check print job status from your desktop with Xerox CentreWare® Internet Services (IS) Embedded Web Server, which works seamlessly with your browser
- Built-in PrintingScout™ functionality tracks print jobs and provides immediate print-issue alerts and timely correction suggestions
- Convenient email alerts notify network administrators of common delays, such as low toner levels, to help maintain an uninterrupted workflow

Built for sharing

High-capacity paper volumes, powerful performance features and seamless network integration — the Phaser 6360 is the ultimate multiuser printing solution.

- Maximum input of 2,350 pages and high-capacity toner cartridges keep the Phaser 6360 poised to handle a steady stream of print jobs
- Up to 5 paper trays allow the Phaser 6360 to easily adapt to the size of your office
- Administrators can easily collect, organise and analyse print job accounting data from multiple printers with the Usage Analysis Tool

Section 1: Introducing the Xerox Phaser 6360 Colour Laser Printer

Phaser 6360 Configurations



Phaser 6360N

The Phaser 6360N comes packed with features to support busy workgroups in small and large businesses.

Print Performance

- Print Speed — Up to 40 ppm colour and black and white
- First-Page-Out Time — As fast as 9 seconds colour
- Resolution — Up to 2400 x 600 dpi
- Language Support — True Adobe® PostScript® 3™, PCL® 5c emulation

Controller

- Processor — 1 GHz PowerPC
- Memory — 256 MB standard (1 GB maximum)
- Hard Drive — Optional 40 GB (as part of the Productivity Kit)

Connectivity

- Network — 10/100Base-TX Ethernet
- Direct Connect — USB 2.0

Paper Capacity

700 total sheets, standard (2,350 total sheets, optional)

- Tray 1/Multipurpose Tray — 150 sheets
- Tray 2 — 550 sheets
- Tray 3 (optional) — 550 sheets
- Trays 4 and 5 (optional) — 1,100 sheets

Paper Handling

- Supported Sizes —
 - Tray 1/Multipurpose Tray — Selectable sizes from 89 x 140 mm to 216 x 914 mm
 - Trays 2–5 — Selectable sizes up to A4

- Supported Weights —
 - Tray 1/Multipurpose Tray — 65 to 216 gsm
 - Trays 2–5 — 65 to 163 gsm
- Media Types — Plain paper, transparencies, labels, envelopes, card stock, business cards, glossy

Print Features

- Standard — Booklet printing, Mirror image, Scaling, Watermarks, Custom-size pages, Run Black, Cover, RAM collation, Remote Printing, Separators, N-up
- Advanced (requires optional hard disk) — Personal print, Secure print, Proof print, Saved print, Disk collation, Print-With, PDF-direct printing, Extended font/form storage

Reliability

- Duty Cycle — 100,000 pages per month*
- Warranty — One-year on-site

*Print volume uniformly distributed over 30 days.



Phaser 6360DN

Includes all capabilities of the Phaser 6360N, with the following upgrade:

Print Performance

- Automatic two-sided output



Phaser 6360DT

Includes all capabilities of the Phaser 6360DN, with the following upgrades:

Controller

- Memory — 512 MB standard

Paper Capacity

1,250 total sheets, standard (2,350 total sheets, optional)

- Tray 1/Multipurpose Tray — 150 sheets
- Tray 2 — 550 sheets
- Tray 3 — 550 sheets



Phaser 6360DX

Includes all capabilities of the Phaser 6360DT, with the following upgrades:

Productivity Kit:

- 40 GB Phaser hard drive
- Advanced print features enabled

Paper Capacity

1,800 total sheets, standard (2,350 total sheets, optional)

- Tray 1/Multipurpose Tray — 150 sheets
- Tray 2 — 550 sheets
- Tray 3 and 4 dual-tray module — 550 sheets each

Section 2: Evaluating Colour Laser Printers

Overview

The benefits of colour are widely accepted: Colour increases document impact and retention of document information by readers. Evaluating colour printers is less intuitive: There are many factors to consider, but some are more important to your organisation than others. Based on years of experience and research into the real-world needs of colour printer users, Xerox has identified some key issues for you to consider.

Workgroup printers are typically shared by as many as 25 people on a day-to-day basis; even more people are likely to use it on a sporadic basis. To support larger groups of employees, performance is an important characteristic — but it's essential to dig deeper than just page-per-minute numbers. Further, larger workgroups often comprise employees who work off of different platforms and operating systems — such as Microsoft Windows®, Apple Mac® OS or Linux® — so driver support for multiple platforms is another important factor. Finally, deployment, management and day-to-day ease of use are important considerations for larger organisations, where IT resources are often spread thin.

Regardless of the applications or environment, the following areas continue to be very important factors when customers make colour printer purchasing decisions:

Printing Performance and Print Quality

More than just pages per minute, the overall printing performance of a colour printer will indicate whether it can support the workload of your busy employees.

Evaluate Installation

The colour printer you choose needs to be quick and easy to install, whether you have IT staff on hand to assist or not.

Evaluate Ease of Use

For your employees, the printer needs to be simple and intuitive to use on a day-to-day basis: Supplies should be easy to replace and issues easy to resolve.

Evaluate Management

Examine the tools available for IT administrators in larger organisations to manage printer settings, user access, printer status and more.

Your challenge is to evaluate the colour printers available on the market today and choose the one that most completely meets your company's needs in each of these areas. This section of the Evaluator Guide will examine each of these areas, suggest ways you can evaluate a printer against that requirement, and explain how the Phaser 6360 colour laserprinter exceeds the expectations of colour printer users on all counts.



Section 2: Evaluating Colour Laser Printers

Evaluate Printing Performance and Print Quality

Workgroup-class colour laser printers need to deliver a level of performance that can support heavy daily workloads. This includes raw print speed, as well as print job processing speed. Print quality is another overall performance consideration: Does the print quality meet your expectations? Is the print controller powerful enough to support your applications? Is the printer designed to be shared by employees in busy workgroups? Does the printer provide the right media support for your applications?

Performance and print quality requirements:

Overall Print Performance

The Phaser 6360 is a high-performance colour printer built to handle the daily demands of busy medium-size and large workgroups of up to 25 employees. The first thing many customers look at when evaluating printers in this class is print speed — the Phaser 6360 doesn't disappoint, with speeds up to 40 ppm for colour and black and white. For average office print jobs of three pages or less, the more important specification is first-page-out time — the Phaser 6360 delivers in as few as 9 seconds.

The Phaser 6360 delivers impressive office print quality as well, with a resolution of up to 2400 x 600 dpi. The Phaser 6360 features PANTONE® Colour approved solid-colour simulations, and includes a variety of colour correction settings to manage colour output and match printing devices and computer displays. Whether printing internal documents or presentations for customers, the Phaser 6360 delivers print quality your employees can count on to impress.

Powerful Controller

The Phaser 6360 is powered by the most dynamic print controller in its class. It is the only A4 size colour printer on the market today that boasts a 1 GHz PowerPC processor, with 256 MB of memory standard and expandable memory up to 1 GB. This powerful controller adeptly processes complex print jobs and contributes to the impressive first-page-out time delivered by the Phaser 6360.

Built to be Shared

With standard support for 10/100Base-TX Ethernet networking, a 100,000 page-per-month duty cycle, and a customizable paper capacity from 700 to 2,350 pages, the Phaser 6360 is truly built to be shared. Network administration tools are provided to help IT departments track printer use, facilitate charge-back billings, and plan for future printer deployment.

Media Support

The Phaser 6360 can easily handle a wide range of media to support the variety of document types your busy employees produce on a regular basis. Supported media types include plain printer paper, transparencies, labels, envelopes, card stock and glossy media. Media size and weight support for the Phaser 6360 include:

Supported Sizes

- Tray 1/Multipurpose Tray — Selectable sizes from 89 x 140 mm to 216 x 914 mm
- Trays 2–5 — Selectable sizes up to A4

Supported Weights

- Tray 1/Multipurpose Tray — 65 to 216 gsm
- Trays 2–5 — 65 to 163 gsm

Section 2: Evaluating Colour Laser Printers

Evaluate Installation

Setup and installation are the first steps customers must take before realising the benefits of adopting a high-performance colour printer. Is the printer easy to set up and connect to your network? Are print drivers installable by your employees, and are there flexible installation methods for large and small organisations, or for organisations with specific requirements?

How the Phaser 6360 exceeds the installation requirement:

Printer Setup

The Phaser 6360 ships with easy-to-follow, graphic-based instructions on how to remove the printer from its packaging, assemble it and prepare it for printing. Printer setup is straightforward: The Phaser 6360 ships with preinstalled toner cartridges, so the only consumable to install is the all-in-one imaging unit. Once the printer is plugged into power and attached to your network, it will automatically be assigned an IP address by your network — you'll be ready to install print drivers and start printing.

Print Driver Installation

The Phaser 6360 print driver installation process is designed to provide an easy and consistent installation process from all software sources, regardless of platform. The Phaser 6360 print driver installation process can be initiated from multiple locations:

- Phaser 6360 Installation CD
- CentreWare IS Embedded Web Server
- Xerox.com download

The wizard-based driver installation process offers you three methods for selecting the printer you want to install:

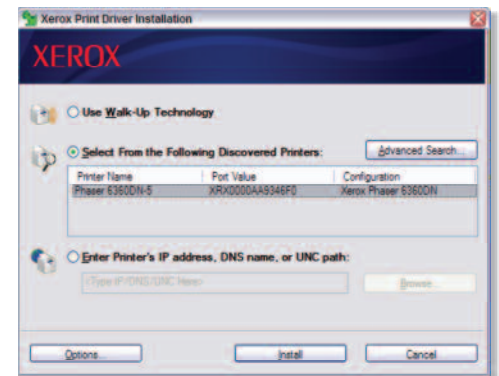
- Use Xerox Walk-Up® Technology (default) — It doesn't get easier than this. The installation application will

direct you to go to the Phaser 6360 you want to install. On the printer front panel, simply select "Walk-Up Features" and "Select for Installation," and the rest of the process is completely automated. You don't need to know the printer name or its IP address.

- Select from the Following Discovered Printers — If you know the name of the printer you want to install, select it from the list of discovered printers, and that printer will be installed.
- Enter Printer's IP address — If you know the IP address of the printer you want to install, enter it here, and that specific printer will be installed.

The Phaser 6360 printer driver installation application automatically discovers what printer configuration you are installing — as well as the presence of features like two-sided output and additional paper trays — and makes it available in your print driver.

For small organisations, this automated installation process makes it easy for your employees to install their print drivers with or without IT assistance. For larger organisations, the IT department can simply send an email to end users with a link to CentreWare IS or the Xerox.com website, enabling them to launch the print driver installer and follow the same simple installation process.



Section 2: Evaluating Colour Laser Printers

Evaluate Ease of Use

When evaluating colour laser printers, it is important to think about ease of use from a variety of angles. Are the printer and print driver simple enough for your employees to learn, and do they help users solve issues and avoid downtime? Does the printer include features that avoid interruptions? Are consumables easy to locate and replace? Is automated support offered to minimise calls to your help desk or to customer support?



How the Phaser 6360 exceeds the ease-of-use requirement:

Front Panel

The large, high-contrast front panel display is simple, well-organised and backlit for comfortable viewing. Toner supply levels are displayed prominently on the default screen, which makes it easy to check toner levels quickly. In addition, the Phaser 6360 front panel offers menu-based navigation features and information, with options such as walk-up features, paper tray setup, printer setup, troubleshooting and shutdown.

The front panel is also a valuable resource for help topics. Pressing the “?” button brings up a contextual help message that explains whatever menu function or message is currently displayed. Further, if the Phaser 6360 needs attention, the front panel will display graphic and text instructions on what you need to do to get it back up and printing.

Print Drivers

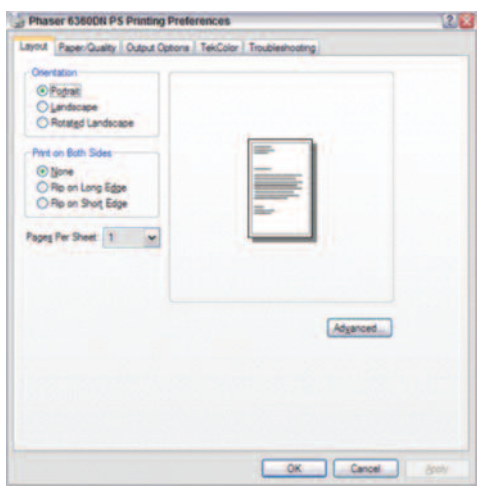
The Phaser 6360 print drivers are intuitively organised to offer quick access to the most commonly used features, with easy tab-based access to the complete feature set. Tabs are organised by:

- Layout — The default driver tab, settings for page orientation, two-sided printing and N-up printing

- Paper/Quality — Paper selection settings and status, as well as options for print quality and cover pages
- Output Options — Settings for walk-up features like Secure and Proof Printing, and insertion of separation pages
- Xerox Colour Correction — Offers a set of advanced features for controlling the colour output of your Phaser 6360, with settings for matching the colour of other printing devices and computer displays
- Troubleshooting — Settings for the PrintingScout utility and links to online help resources
- Print drivers that support True Adobe PostScript 3 and HP PCL 5c emulation are bundled with the Phaser 6360. They deliver a rich feature set, accurate colours and support for your specific applications and workflows.

Intelligent Ready

Intelligent Ready is a standard software feature in the Phaser 6360. With Intelligent Ready, there is no need to turn off the printer. The software tracks when and how the printer is used over a rolling three-week period, which helps the printer learn to automatically place itself into standby and power-saving modes during periods of nonuse. The printer will automatically return to its ready mode just prior to an expected use period, avoiding any warm-up time and



minimising power usage in periods of nonuse.

PrintingScout

When you send a document to the Phaser 6360, the Xerox-exclusive PrintingScout utility monitors and reports any printer condition that might prevent a print job from completing successfully. A pop-up help window provides appropriate how-to instructions, illustrations and links to help the print job owner quickly identify and resolve his or her printing problem. This way, when end users must visit the printer, they're completely prepared to fix any problems.

Automatic Notification

What would be better than knowing if your printer needs help before you print? How about avoiding the problem altogether. MailinX email alerts automatically notify a specified recipient when a printer needs supplies or maintenance. This feature will help you avoid getting caught without replacement consumables when you need them — and also help reduce printer downtime.

Paper and Consumable Capacities

The Phaser 6360 gives you broad flexibility when configuring the printer for your office environment. The Phaser 6360 comes standard with a 550-sheet paper tray (allowing you to conveniently load an entire ream of paper without running the tray completely empty) and a 150-sheet multipurpose tray for 700 sheets of total capacity. You can add two paper tray upgrade options — a single 550-sheet tray or a 1,100-sheet dual tray module — for a total capacity of up to 2,350 sheets. This allows the Phaser 6360 to be configured to fit both small and large workgroups that regularly print on different media types and sizes.

You have similar options when purchasing

toner. Standard toner cartridge capacities are approximately 5,000¹ pages for cyan, magenta and yellow and approximately 9,000¹ pages for black. Standard cartridges are a good option for companies that want to minimise the purchase price of their toner cartridges. High-capacity toner cartridges are also offered, with capacities of approximately 12,000¹ pages for cyan, magenta and yellow and 18,000¹ pages for black; this is the best option for companies that want to minimise the frequency of purchasing and replacing toner cartridges.

¹Average standard pages. Declared Yield based on 5% area coverage on an A4-size page. Yield will vary based on image, area coverage and print mode.

Consumable Replacement

Installing toner cartridges is quick and easy. All four toner cartridges are accessible under the translucent cover atop the printer. Simply remove the cover and the empty toner cartridge, then install the new toner cartridge. Once the new cartridge is in place, remove the seal and replace the cover. Even someone unfamiliar with the printer can see where the toners go and follow the simple toner replacement instructions.

The transfer roller, fuser and all-in-one imaging unit can be accessed just as easily through the printer's front cover. Replacing any of these items takes less than a minute and doesn't require a technician.

Automated Support

The Phaser 6360 includes the Xerox exclusive PhaserSMART® utility — an automated, internet-based support and service delivery tool. PhaserSMART leverages information from your printer to diagnose and deliver self-support solutions. Available 24 hours a day, seven days a week, PhaserSMART is only a mouse-click away.



Section 2: Evaluating Colour Laser Printers

Evaluate Management

The ongoing management of colour printers is another fundamental consideration. Are tools provided for managing printer settings, checking printer status, and assisting with troubleshooting? Can you run detailed reports on printer usage and costs? Does the printer interoperate with network management tools you might already have in place?

How the Phaser 6360 exceeds the management requirement:

CentreWare IS Embedded Web Server

The CentreWare IS Embedded Web Server acts as a website inside the Phaser 6360 printer. CentreWare IS allows network administrators and general users to check printer status, troubleshoot interruptions, check supply levels, install printer drivers, manage printer settings and more — all via web browser from any computer connected to your network. You only need the printer's IP address to access CentreWare IS.

CentreWare Web Network Management Utility

The CentreWare Web utility provides enterprise management solutions for all devices connected to your network — not just Xerox devices. Install, troubleshoot, configure and produce asset reports for all your devices. Simply install CentreWare Web on a server or computer running Microsoft Windows® Server/Advanced Server, XP or 2003 with Internet Information Services 5.0 or higher, and you gain access from anywhere on your network through any standard web browser.

The key advantages of CentreWare Web are listed below:

- When entering the tool, system administrators automatically see all printers and MFPs currently in an error state without having to search for them.
- You save valuable time with the ability to conduct installation, configuration and troubleshooting on up to 25 printers simultaneously
- You only need one tool: CentreWare Web enables you to install, configure, troubleshoot and generate reports for most of the printers and MFPs on your network, regardless of vendor
- Printer configurations can be cloned to other printers, instead of taking the time to configure printers one at a time
- Produce asset reports, error history reports, status reports and accounting reports for all your devices, and have them emailed to key recipients
- Intuitive wizards guide you through infrequently performed tasks such as upgrading printer firmware, cloning device configurations, installing multiple printers and more

Advanced Network Management Tools

The Advanced Network Management Tools CD shipped with the Phaser 6360 includes:

- CentreWare Microsoft Management Console (MMC) — allows seamless installation, configuration and status monitoring of Xerox network printers in the Windows environment
- CentreWare for UNIX — provides enhanced printing and management capabilities for UNIX or Linux environments
- NDPS Gateway — enables the use of Novell Distributed Print Services (NDPS) and Novell Enterprise Print Services (NEPS) with Xerox printers
- Multiple Printer Installation Tool — allows system administrators to copy settings from one printer to others on the network
- Usage Analysis Tool — provides detailed cost tracking for Phaser printers, tracking every print job and the cost for each page based on toner coverage and your actual prices for supplies
- Font Download Tool — manages your printer fonts from an easy-to-use Windows application

Section 3: Single Pass Colour Laser Technology

Inside a Colour Laser Printer

How it Works

To create a four-colour image in a single pass, four laser beams representing each of the four colour separations charge their respective imaging drums. The drums are then developed with toner.

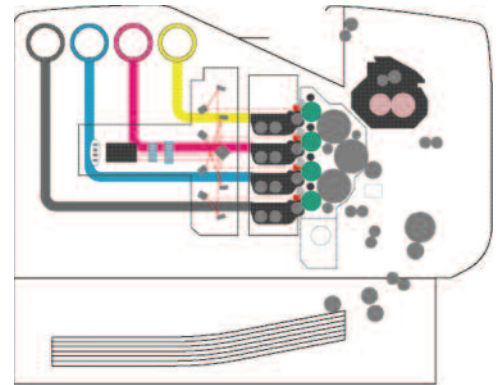
The yellow and magenta drums transfer their images simultaneously to an intermediate transfer roller. The cyan and black drums simultaneously transfer their images to a different intermediate transfer roller.

The yellow/magenta and cyan/black colour toner images are then combined on the second intermediate transfer drum, where the final image is transferred to the paper, then fused by heat and pressure.

Why it's Better

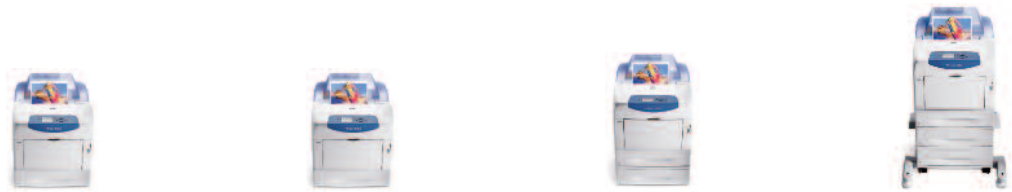
The oil-less chemical toners used in the Phaser 6360 printer adhere to the surface of the page rather than soaking into the paper, increasing the intensity of the colour.

The Constant Current Transfer (CCT) technology provides enhanced image transfer on a wide variety of media types, ensuring the best quality. The simple paper path and dual paper pick mechanisms help ensure the lowest paper jam rate in the industry. And the internal duplexing capability (two-sided printing) is the same proven and reliable design used in previous generations of Phaser printers.



Section 4: Configurations, Specifications, Supplies, Support and Information Sources

Configuration Summary



| | | Phaser 6360N | Phaser 6360DN | Phaser 6360DT | Phaser 6360DX | |
|------------------------------|-------------|---|---------------|---------------|---|--|
| Speed | | Up to 40 ppm colour / 40 ppm black and white | | | | |
| Duty Cycle | | 100,000 pages / month* | | | | |
| Paper Handling | Paper input | Tray 1 (MPT): 150 sheets; Selectable sizes: 89 x 140 mm to 216 x 914 mm | | | | |
| | | Tray 2: 550 sheets; Selectable sizes: Up to A4 | | | | |
| | Standard | Additional 550-sheet Feeder | | Standard | Optional | |
| | Optional | Additional 1100-sheet Feeder | | | Standard | |
| Paper output | Standard | 250 sheets | | | | |
| Automatic two-sided printing | | Optional | Standard | | | |
| Print | | | | | | |
| First-page-out-time | | As fast as 9 seconds colour | | | | |
| Resolution (max) | | 2400 x 600 dpi | | | | |
| Processor | | 1 GHz | | | | |
| Memory (std / max) | | 256 MB / 1 GB | | 512 MB / 1 GB | | |
| Connectivity | | 10/100Base-TX Ethernet, USB 2.0, IPv6** | | | | |
| Page description languages | | Adobe® PostScript® 3™, PCL® 5c emulation | | | | |
| Print features | | Booklet printing, Mirror image, Scaling, Watermarks, Custom-size pages, Run Black, Covers, Separators, RAM collation, Remote Printing, N-up | | | | |
| Productivity kit | | Optional | | | Hard drive: Secure/Proof/Personal/ Shared Saved/Personal Saved Print, Print With, Hard disk collation, PDF-direct print, Extended font/form storage | |
| Security | | 802.1x, IPsec, SMNP v3, Secure Print and Hard Drive Overwrite (requires Productivity Kit) | | | | |
| Warranty | | One-year on-site warranty*** | | | | |

* Range reflects the number of pages per month the product can regularly print while maintaining optimal performance (considering factors including supplies replenishment and reliability over the expected product life)

** Requires system firmware version 1.3.7.P.

***Products purchased under a "PagePack" agreement do not carry a warranty. Please refer to your service agreement for full details of your enhanced service package.

Section 4: Configurations, Specifications, Supplies, Support and Information Sources

Specifications

| Specifications | |
|---|--|
| Device Management | Xerox CentreWare IS Embedded Web Server, Xerox CentreWare Web, Xerox NDPS Gateway, Xerox Usage Analysis Tool, Xerox Support Centre, Configuration card, PrintingScout™, MailinX email alerts, PhaserSMART® |
| Printer Driver Support | Apple: Max OS 9.x, Mac OS version 10.3 and above, Linux: Linux Red Hat®, Fedora™ Core 5, SUSE™ Linux 10.0, Microsoft: Support Windows XP, Windows 2003 Server, Windows Vista (available Q2 2007), Novell: NetWare 5.x/6.5 (NDPS only), UNIX: IBM AIX® 5.1, HP/UX® 11.0/11i, Sun Solaris™ 9/10, Xerox: Walk-Up® Printer Driver with Windows |
| Media Handling | Tray 1: Weights: 65 to 216 gsm, Selectable sizes from 89 x 140 mm to 216 x 914 mm Trays 2-5: Weights: 65 to 163 gsm, Selectable sizes up to A4 |
| Operating Environment | Temperature: Storage: 0° to 35° Celsius, Operating: 10° to 32° Celsius Relative Humidity: Storage: 15% to 85%, Operating: 15% to 85 Sound Power Levels: Printing: 7.26 B, Standby: 5.0 |
| Electrical | Power: 220–240 VAC, 50/60 Hz Power Consumption: Power Save: Less than 20 W, Standby: Less than 105 W, Printing: Less than 750 W ENERGY STAR® qualified (Phaser 6360/DN, DT and DX configurations) |
| Dimensions (Width x Depth x Height) | Phaser 6360N/DN: 429 x 580 x 513 mm; Weight: 35.2 kg Phaser 6360DT: 429 x 580 x 643 mm; Weight: 42 kg Phaser 6360DX: 572 x 698 x 854 mm; Weight: 123.6 lbs. 56.2 kg |
| Certification | FCC Part 15, Class A, Listed UL 60950-1/CSA 60950-1-03 CE Mark applicable to Directives 73/23/EEC, 89/336/EEC and 1999/5/EC, Section 508 ADA |

Section 4: Configurations, Specifications, Supplies, Support and Information Sources

Supplies, Options and Extended Service Agreements

| Supplies | Part Number | Description | Capacity |
|----------------------------------|-------------|---|--|
| Toner Cartridges | 106R01214 | Cyan Standard-Capacity Toner Cartridge | Average 5,000 standard pages ¹ |
| | 106R01215 | Magenta Standard-Capacity Toner Cartridge | Average 5,000 standard pages ¹ |
| | 106R01216 | Yellow Standard-Capacity Toner Cartridge | Average 5,000 standard pages ¹ |
| | 106R01217 | Black Standard-Capacity Toner Cartridge | Average 9,000 standard pages ¹ |
| | 106R01218 | Cyan High-Capacity Toner Cartridge | Average 12,000 standard pages ¹ |
| | 106R01219 | Magenta High-Capacity Toner Cartridge | Average 12,000 standard pages ¹ |
| | 106R01220 | Yellow High-Capacity Toner Cartridge | Average 12,000 standard pages ¹ |
| | 106R01221 | Black High-Capacity Toner Cartridge | Average 18,000 standard pages ¹ |
| Routine Maintenance Items | 115R00056 | 220V Fuser | Approximately 100,000 pages ² |
| | 108R00645 | Imaging Unit | Approximately 35,000 pages ³ |
| | 108R00646 | Transfer Roller | Approximately 35,000 pages |

¹ Average standard pages. Declared Yield based on 5% area coverage on A4-size page. Yield will vary based on image, area coverage and print mode.

² Declared Yield based on A4-size 75 gsm pages. Yield will vary based on media type, size, weight, and usage patterns.

³ Declared Yield based on an average job size of 4 pages. Yield will vary based on job run length, media size and orientation.

| Options | Part Number | Description |
|---------|-------------|--|
| | 097S03791 | Phaser 6360N to DN upgrade |
| | 097S03747 | Productivity Kit with internal hard disk drive |
| | 097S03378 | 550-Sheet Feeder, adjustable up to legal, Phaser 6300/6350/6360 |
| | 097S03379 | 1100-Sheet Feeder, adjustable up to legal, Phaser 6300/6350/6360 |
| | 097S03381 | 256 MB Phaser Memory |
| | 097S03382 | 512 MB Phaser Memory |
| | 097S03741 | Wireless network adapter – Euro power converter |
| | 097S03742 | Wireless network adapter – UK power converter |

| Extended Service Agreements | Part Number | Description |
|-----------------------------|-------------|--|
| | E63XXS3 | 2 years additional (total of 3 years)* |
| | E63XXS4 | 3 years additional (total of 4 years)* |

*Available for purchase during first 90 days of product ownership.

Section 4: Configurations, Specifications, Supplies, Support and Information Sources

Support and Additional Information Sources

Unrivaled service and support

Behind every Xerox product is a large network of customer support that's unrivaled in the industry and available when you need it. Xerox service professionals use leading-edge technologies to keep you up and running. They're even linked to the engineers who designed your product, so you can be confident when you choose Xerox. And genuine Xerox supplies are always readily available.

Xerox Office Services Support

Asset Management Services

- Asset Optimisation and Tracking — Process and tools to optimise an enterprise's office output infrastructure and reduce hard costs.
- Break-Fix Management — Single point of ownership and management for break-fix service for all brands of office output devices, regardless of manufacturer
- Supplies Management — Process and tools to procure, monitor and replenish all document related supplies proactively.

Imaging and Output Management Services

- Output Management — Single point of management of office output from all output devices, regardless of manufacturer.
- Image Capture and Workflow — Cost efficient solutions for capturing, managing, retrieving and distributing information into digital repositories.

Support Services

- Technology Procurement & Deployment — A creative and flexible end-to-end print/computer product acquisition solution that uses a single-point-of-contact model, while lowering the total cost of acquisition.
- Help Desk Services — A broad range of enterprise services, managed through a centralised single point of contact and delivered through either an on-site or off-site model.
- End User Services — Microsoft software implementation, IT project consulting, and customer education.

Access Managed Services

- Student and Library Patron Access — Custom designed and implemented customer-managed solutions for student and library patron print access management.

Additional Information Sources

Phaser 6360 Front Panel:

- The Front Panel offers tools and information pages to help with machine setup, feature selections, operational problems, media feed and supply issues.

Customer Documentation Contains:

- Installation Guide
- Quick Use Guide
- Software and Documentation CD-ROM
- Registration Card
- Warranty Booklet

On the Web

Visit www.xerox.com/office for:

- Product, supplies and support information
- Downloading drivers
- Finding your local Xerox sales representative
- Online documentation

Visit www.xerox.com/office/support for:

Support and service information, including the same troubleshooting Knowledge Base used by Xerox Customer Support staff to provide the latest technical information on:

- Application issues
- Errors
- Print-quality issues
- Troubleshooting

Questions? Comments? Problems?

If you have any questions, please contact your Xerox sales representative or visit us on the web at www.xerox.com/office.

